

# Institution Development Policy



**Mahatma Gandhi College**

Thiruvananthapuram

## Leadership and Direction

At Mahatma Gandhi College, the institutional policies emphasize decentralized decision-making with significant academic and administrative decisions being made by various committees under the College council. The strategic formulation is underpinned by a vision to enhance excellence, equity, inclusiveness, and social justice in education. The college's leadership fosters a coherent direction through sustained efforts, maintaining a focus on cultural and physical training inputs for building a healthy society.



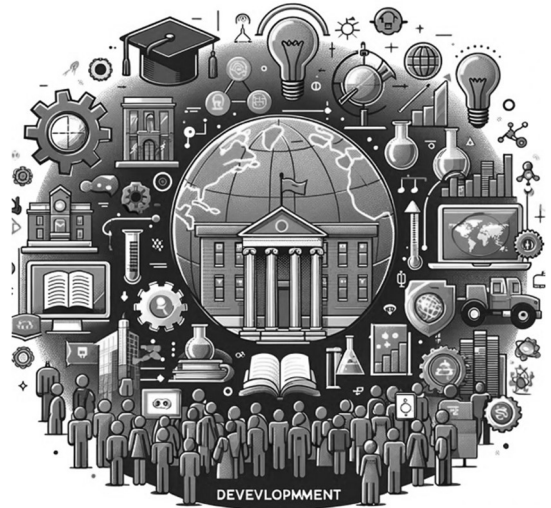
## Articulation of Goals

The college's strategic goals are framed to support its mission of providing value-added quality education, especially focusing on the economically poor sections of society. These goals are expressed in the college's own terms, guided by the motto "Sa Vidya Ya Vimukthaye" (That is knowledge which liberates), aiming to set standards in educational excellence and competence through curriculum enrichment and information dissemination.

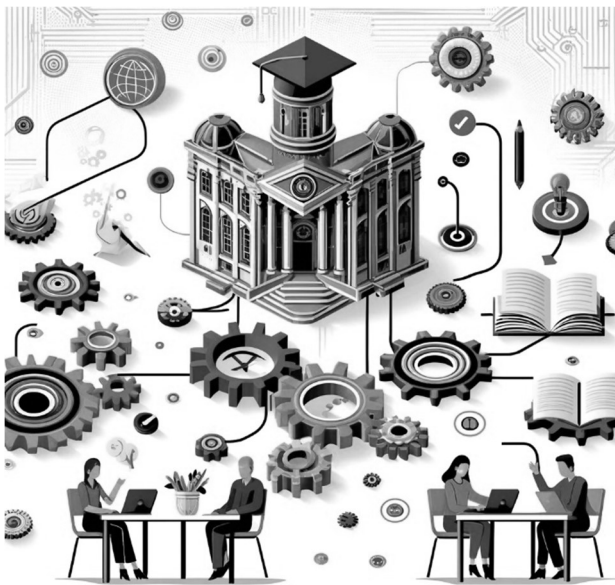


## Integrated Development Objectives

The development objectives at Mahatma Gandhi College are designed as integrated yet distinct facets of institutional development. These objectives encompass academic enhancements, research initiatives, infrastructure upgrades, and community engagement, aimed at achieving holistic growth and sustainability.



## Autonomy and Implementation



The operationalization of the strategic plan is guided by the college's autonomous status, ensuring that the development plan respects the institution's independence while encouraging collaboration across departments. The Internal Quality Assurance Cell (IQAC) plays a crucial role in this aspect, focusing on quality sustenance and enhancement across all institutional functions.

## Major Components for Institutional Excellence

The Major Components for Institutional Excellence at Mahatma Gandhi College can be understood through several crucial enablers that collectively aim to promote a comprehensive and sustainable approach to institutional development. These components are designed to ensure that the college not only meets current educational standards but also sets a benchmark for future development. Here's a detailed look at each component:

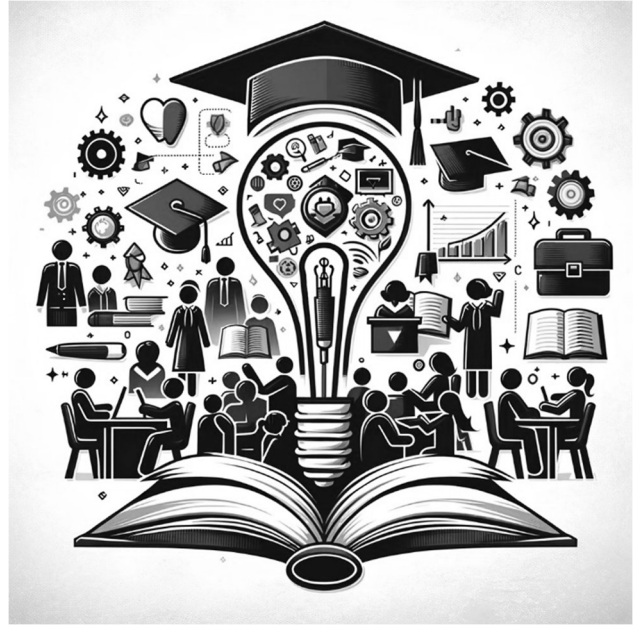
### 1. Governance Enablers

Governance enablers refer to the strategies and structures put in place to ensure effective leadership and management within the institution. At Mahatma Gandhi College, governance is facilitated through a well-defined structure comprising the College Council, Planning Board, and various administrative bodies. These entities work together to make strategic decisions, oversee academic and operational activities, and ensure compliance with educational regulations. Effective governance is crucial for aligning the institution's strategic goals with operational execution and for maintaining accountability at all levels.

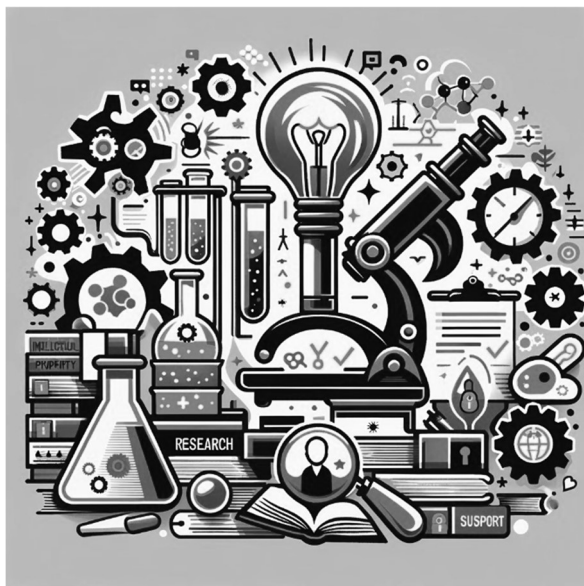


## 2. Academic Enablers

Academic enablers focus on enhancing the quality and relevance of the educational offerings. This involves continuous curriculum assessment and development, ensuring that all courses are up-to-date and meet the needs of both the students and the wider job market. The college's Academic Committee plays a significant role here, monitoring the academic programs and coordinating with faculty to deliver high-quality education. This also includes adopting innovative teaching methods and integrating new technologies to improve learning outcomes.



## 3. Research, Intellectual Property, and Supportive Enablers



Research and intellectual property enablers are essential for fostering a culture of innovation and inquiry. Mahatma Gandhi College encourages its faculty and students to engage in research activities, supporting them through access to necessary resources and funding. The institution also promotes the protection of intellectual property to ensure that innovative ideas and discoveries are recognized and rewarded. This not only

enhances the college's academic profile but also contributes to the broader knowledge economy.

#### 4. Human Resources Management Enablers

Human resource management enablers at the college involve strategies to recruit, retain, and develop faculty and staff who can fulfill the institution's educational mission. This includes providing adequate training, professional development opportunities, and a supportive work environment that encourages academic freedom and innovation. Balancing regulatory compliance with the need for flexibility is key to creating an adaptive and responsive educational institution.



#### 5. Enablers for Networking and Collaborations



Networking and collaboration are pivotal for extending the learning environment beyond the college's physical boundaries. By establishing partnerships with other educational institutions, industry, government agencies, and international bodies, Mahatma Gandhi College enhances its educational offerings and research opportunities.



for students and staff. Embracing digital enablers helps the college stay relevant and competitive in a rapidly changing educational landscape.

Each of these components plays a vital role in advancing institutional excellence. They are interconnected, reinforcing each other to create a dynamic and effective educational environment that supports the college's mission and strategic objectives.

## Summary

The development policy at Mahatma Gandhi College is designed to foster an environment of excellence, inclusivity, and innovation, aligned with the National Education Policy (NEP) and other regulatory standards. This comprehensive approach not only supports the college's immediate educational goals but also prepares it for future challenges and opportunities in higher education.

